

Software RIP combining usability and high performance

RasterLink6

Intuitive and user-friendly operation



Basic setting items are indicated by icons, enabling intended operations to be performed intuitively without hesitation.

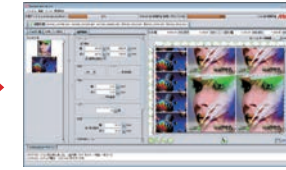
The 3-layer print which uses White ink can be set up easily.



1 2nd and 3rd layer image data can be created from the first layer with just one click.



2 Three layer printing is easily achieved by selecting the print jobs and pressing the "Composition" button. Mirroring and changing the job order is also easy, enabling a clear preview of print results.



3 Multiple 3 layer print jobs can be laid out and copied on the same print media. The automatic layout function optimizes the layout of print jobs to reduce media consumption.

Web update function is supported.

Supports the Web update function that has been well-received in RasterLinkPro5. Program update and profile download can be easily performed via internet.

Specifications

Item	JV400-130/160LX	
Head	On-demand Piezo head (Array of 2 heads in-line)	
Maximum width	1,361mm (53.6") / 1,610mm (63.4")	
Print resolution	600, 900, 1,200dpi	
Print speed	Draft	18.2m ² /hr (200x900dpi, 6pass, bi-directional, 4 color)
	Standard	11.1m ² /hr (900x900dpi, 12pass, bi-directional, 4 color)
Ink	Latex ink LX101	4 color (C,M,Y,K) / 7 color (C,M,Y,K,Gr,G + W) *White ink is LX100
	Ink supply system	600 ml ink pack (LX100 white ink is for 220 ml ink cartridge)
Media	Width	Up to 1,371mm (54.0") / 1,620mm (63.8")
	Weight	Up to 25kg (55.1 lbs)
	Roll diameter	Up to φ180mm (7.1")
	Inside roll diameter	2-3 inch
Drying device	Print aspect	Inside / outside
	Cutter	Y-direction cutter after head section
Media Take-up device		3 way intelligent heater (Pre/Print/Post)
		Ventilation fan unit, Drying heater
Interface	Roll take-up device, inside/outside selectable	
Applicable standard	USB2.0	
Power specification	VCCI class A, FCC class A, UL 60950-1	
	CE Marking (EMC, Low voltage and Machinery directive), CB Report	
Power consumption	AC 100~240V±10% (Automated voltage conversion)	
Operational environment	1,440W × 2	
	1,800W × 2	
Dimensions (W×D×H)	Temperature: 20°C-30°C (68-86 °F);	
	Humidity: 35-65 % RH (non condensing)	
Weight	2,634-854×1,435mm / 2,879×854×1,435mm	
	216kg (476 lbs.) / 231kg (509 lbs.)	

Eco-cartridge method

Eco-cartridges can be used repeatedly by changing spent ink packs.



Related Product

New Solvent UV Ink (SU100) on board

JV400-130/160 SUV



SU100 ink:



High gloss output

High durability adhesion and scratch resistance

UV ink cures during the post processing

Some of the samples in this catalogue are artificial renderings. Specifications, design and dimensions stated in this catalogue may be subject to change without notice (for technical improvements, etc.). The corporate names and merchandise names written on this catalogue are the trademark or registered trademark of the respective corporations. Inkjet printers print using extremely fine dots, so colors may vary slightly after replacement of the printing heads. Also note that if using multiple printer units, colors could vary slightly from one unit to other unit due to slight individual differences.



Our factory is certified according to ISO14001:2004

MIMAKI ENGINEERING CO., LTD.
2182-3 Shigeno-otsu, Tomi-city, Nagano 389-0512, Japan
Tel: +81-268-78-2288
trading@mimaki.jp www.mimaki.co.jp

MIMAKI USA, INC.
150 Satellite Boulevard, suite A, Suwanee, Georgia 30024, U.S.A
Atlanta +1-888-530-3988 Boston +1-888-530-3986
Los Angeles +1-888-530-3987 Chicago +1-888-530-3985
www.mimakiusa.com

MIMAKI EUROPE B.V.
Stammerdijk 7E, 1112 AA Diemen, The Netherlands
Tel: +31-20-4627-640
info@mimakeurope.com
www.mimakeurope.com @MimakiEurope

DB10316-01

<Latex Ink Model> Wide Format Inkjet Printer

JV400 Series

JV400-130LX / JV400-160LX

Mimaki

Product Brochure

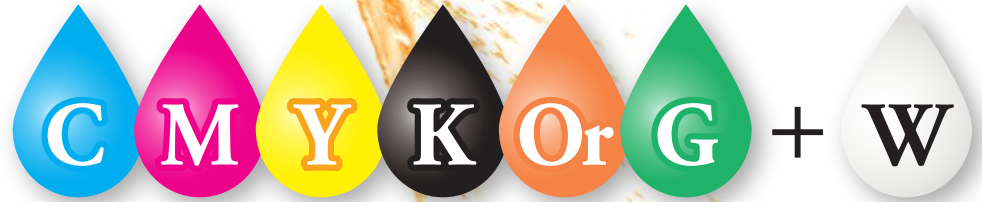
The advanced
Mimaki latex ink
is the reason



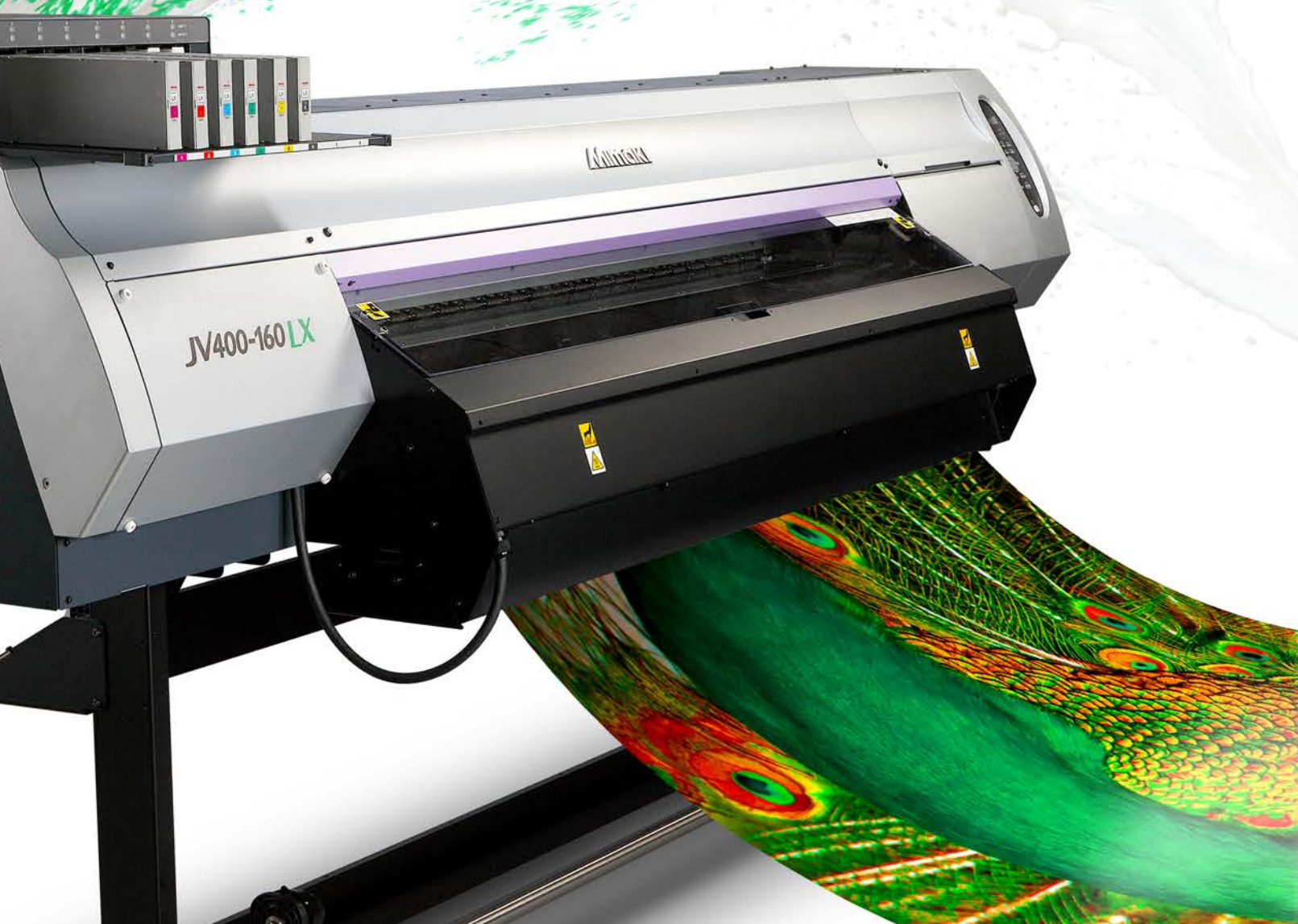
Mimaki
Green Technology



Advanced Mimaki Latex



MIMAKI Six-color Process Printing + White



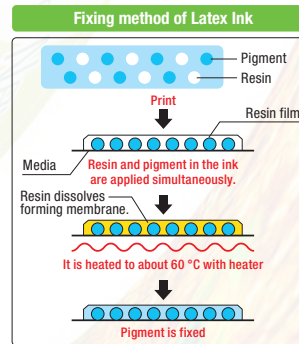
For signage, posters, color proofing and more.....
JV400LX meets a wide range of applications.

- merit 1** JV400LX can print on media which is for solvent ink, such as PVC, banner material and other signage media. Therefore, the smooth shift to latex printer from solvent printer is possible.
- merit 2** Media which has an ink receptive layer is relatively expensive. JV400LX accepts many types of printing media including affordable, non-treated ones such as poster paper, temporal wall paper for decoration and so on.
- merit 3** Direct printing on product packages and labels is achieved by DDCP*. Highly realistic product samples make business presentations much more impressive and expand business opportunities.
 * Direct Digital Color Proofing

Eco-friendly multifunctional water-based ink World's First latex white ink

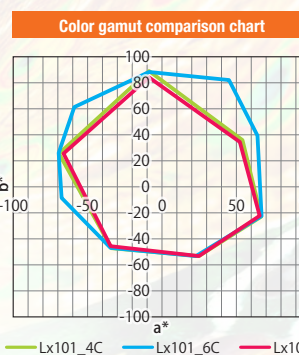
Excellent usage for outdoor and indoor applications

Latex ink fixes pigment on media because resin contained in the ink dissolves with the heat, forming a membrane.
 Latex ink can be output on PVC film, banner material, backlit, bluebacked paper, indispensable for sign making and on most media that are currently used in eco-solvent machines.
 Moreover, non-coated media without an acceptance layer, such as paper and textile, can be printed as well. This excellent media compatibility is very attractive as it supports new applications and can expand future print business.



Wide gamut is achieved

LX101 ink covers 93% of approximate Pantone color chart with high reproducibility of color gamut that cannot be achieved by 4 color printing. Taking advantage of high color reproducibility, an application range is widely extended to POP/posters for company logos and proofing of package designs that are mostly specially designed.



- Wider color gamut by newly added orange and green inks. *
 - Clear and defined printing results due to the improved black ink density.
 - Improved print vibrance on most media.
- * Supported by Raster Link 6 Ver.1.4 and later.

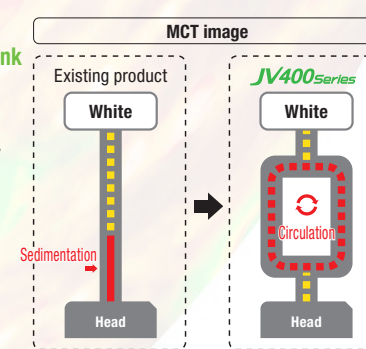
The World's First White Latex Ink

White ink helps retain the natural vividness of colors by being used as a base to print on transparent or colored materials. It is very effective in the creation of clear film window graphics etc.

Ink circulation, Eco-friendly & economical applications of white ink

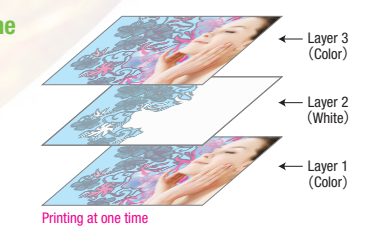
MCT (*) to regularly circulate white ink is standard equipment. It enables stable output from the startup time by effectively avoiding the settling of white pigment in the ink lines. In addition, MCT contributes to reduction of ink waste, thereby supporting environmentally and economically friendly applications.

* MCT = Mimaki Circulation Technology. MCT works only with white ink.



Three-layer printing at one time

A three-layer printing of color, white and color can be performed at one time. The underlay printing of a base layer of white ink allows reproduction of the natural beauty of colors printed on transparent media in perfect registration.



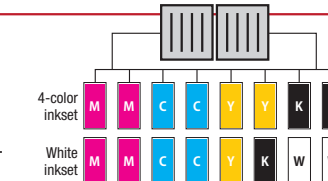
No drying time, Immediate secondary processing

Mimaki Latex ink is fixed and cured right after printing, therefore it is not necessary to care about drying time. After printing, the secondary processing, such as lamination, can be performed, dramatically increasing time and efficiency.



Top ranking print speed

In order to achieve faster printing speed, two newly-developed print heads are set in-line. The new print head has four nozzle lines and one line has 320 nozzles.



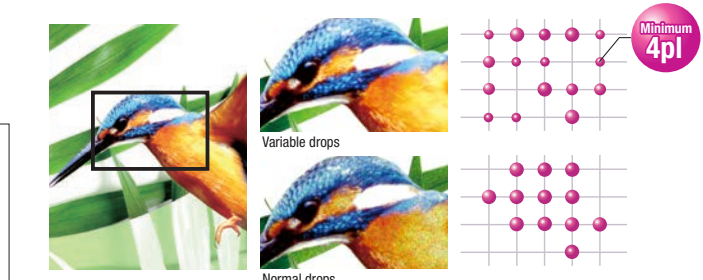
Print speed

	m/h	0	5	10	15	20m/h
4-color inkset						
Draft 1200 x 900dpi, 6p, Bi					18.2m/h	17.0m/h
High speed 1200 x 1200dpi, 8p, Bi					13.8m/h	12.9m/h
Standard 900 x 900dpi, 12p, Bi, Hi					11.0m/h	10.1m/h
High quality 1200 x 1200dpi, 16p, Bi, Hi					6.6m/h	6.1m/h
					-160	-130
7-color inkset						
Draft 1200 x 900dpi, 12p, Bi					9.1m/h	8.5m/h
High speed 1200 x 1200dpi, 16p, Bi					7.0m/h	6.5m/h
Standard 900 x 900dpi, 24p, Bi, Hi					5.6m/h	5.1m/h
High quality 1200 x 1200dpi, 32p, Bi, Hi					3.3m/h	3.1m/h
					-160	-130

*Print speed of white ink(Standard model): 1 layer (White ink only) 3.3m/h, 2 layer (White+ Color) 1.9m/h, 3 layer (Color+White+Color) 1.4m/h

High quality prints are made available by advanced technology

Variable drops function provides 3 different drop sizes at once. The minimum size is amazingly small 4 pico-litter drop and produces smooth and natural gradation, without granular appearance even in the 4-color mode.



Fail-safe features for continuous operation

Nozzle Recovery Function

Even when the nozzle cleaning does not work on clogged nozzle, the image quality can be recovered temporarily. With this system, the continuous printing without losing image quality is possible, while the conventional printers have to stop printing and wait for the arrival of service person.

* Nozzle Recovery Function is a temporal "failure averting function" to continue operation, and its recoverability is limited.

