

SOUDAL



Soudal Industrial Products

Product Selection Guide

SOUDAL

The Experts in Sealants, Adhesives & Foams.

Soudal Supertack & Fix All®

All Materials. All Conditions. All Surfaces.

Soudal Products now Available from Graphic Art Mart.

1300 GAMART (426 278) | Australia Wide www.gamart.com.au | 24/7 Online Shopping



Soudal's Supertack & Fix All® industrial MSPolymer® Adhesives are now available to the Sign Industry through Graphic Art Mart. Soudal's professional range of adhesives, tools & cleaners will offer you more choice when selecting the right products for the job.

Soudaseal Supertack

Industrial Quality MSPolymer® Supertack Adhesive

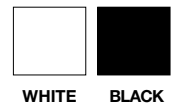
Soudaseal Supertack is a high quality power adhesive with extreme initial grab. It is based on MSPolymer®, chemically neutral and fully elastic. For bonding objects on horizontal or vertical surfaces where super adhesive strength and an exceptional initial grab is required.

For more info visit gamart.com.au or call 1300 426 278.



- Extremely High Initial Tack 200Kg / M² (Full Surface)
- Free Of Isocyanates, Solvents, Acids, Etc
- Very High Adhesive Strength
- Triangular Nozzle
- Fully Elastic

WEBCODE: SOUSDST



Soudal Fix All® High Tack

Professional Quality MSPolymer® High Tack Adhesive

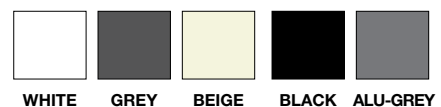
Soudal Fix All® High Tack is a high quality adhesive with high initial grab. It is based on MSPolymer®, chemically neutral and fully elastic. For bonding objects on horizontal or vertical surfaces where high adhesive strength and a high initial grab is required. Available in 5 colours.

For more info visit gamart.com.au or call 1300 426 278.



- High Initial Tack 120Kg/M² (Full Surface)
- Free Of Isocyanates, Solvents, Acids, Etc
- Nozzles With Caps

WEBCODE: SOUDFA



New South Wales
Ph: (02) 8843 0299
nsw@gamart.com.au

Queensland
Ph: (07) 3633 0100
qld@gamart.com.au

Victoria
(03) 8562 1000
vic@gamart.com.au

Australia Wide
Ph: 1300 426 278
www.gamart.com.au

graphic art mart™
NATIONAL SUPPLIERS TO SIGN, DIGITAL AND DISPLAY.

Now Available at Graphic Art Mart Australia Wide.

SOUDAL

Soudal Fix All® Crystal

100% Crystal Clear MSPolymer® Adhesive

Soudal Fix All® Crystal is a 100% clear quality adhesive which combines high elasticity with strength. It is based on MSPolymer®, chemically neutral and fully elastic. For bonding objects on horizontal or vertical surfaces.



- 100% Crystal Clear
- Fully Elastic
- Free Of Isocyanates, Solvents, Acids, Etc

WEBCODE: SOUDCRY

Soudal Application Gun

Professional Heavy Duty Steel Skeleton Gun

The Soudal Application gun is a powerful heavy duty steel black finished skeleton gun. Featuring Soudal Dripless System which reduces mess and product waste. This gun is the perfect partner for Soudal's range of applied adhesives, fillers and sealants.



- Professional Quality
- Ideal For High Viscosity Products
- Ideal For Supertack & High Tack

WEBCODE: SOUDGUN

Soudal Swipex Wipes

Professionally Designed Heavy Duty Wipes

Soudal Swipex Wipes are Heavy duty non-woven wipes impregnated with a liquid formula designed to remove paint and other associated soils such as inks, adhesives, sealants, oils and greases from hands, tools and general hard surfaces.

*"Convenient & Powerful
Ready-To-Go Wipes"*

- Contains Solvents & Detergents
- Contains Skin Conditioning Agents
- Remove Fresh Sealant & Adhesives

WEBCODE: SOUDSPEX



Soudal Cleaner & Degreaser

Professional Fast-Drying Surface Spray Cleaner & Degreaser

Soudal Cleaner & Degreaser is a fast-drying cleaner and degreaser for a wide range of operations. Suitable for preparation of surfaces before applying sealants & adhesives. Ideal for removal of excess, unhardened MS, PU or silicone sealing, excess tar, grease and wax.

"Leaves No Residue"

- Degreases Substrates
- Flashes Off Quickly
- Removes Fresh Sealants & Adhesives

WEBCODE: SOUDCLDE



Soudal Sealant Remover

Professional Fast Working Spray Sealant Remover

Soudal Sealant Remover is a ready-to-use and fast-working spray based on terpenes for removing hardened silicones and MS polymers. Can be applied on most surfaces, including aluminium, coatings, ceramics, laminated board, paint and certain plastics.

*"Removal is Quick...
Works In 10 Minutes"*

- Spray Onto Cured Sealants
- Removes Materials Such as: Ms, Pu, Silicone, Acrylic, Butyl Mastics, Etc

WEBCODE: SOUDRE



New South Wales
Ph: (02) 8843 0299
nsw@gamart.com.au

Queensland
Ph: (07) 3633 0100
qld@gamart.com.au

Victoria
(03) 8562 1000
vic@gamart.com.au

Australia Wide
Ph: 1300 426 278
www.gamart.com.au

 **graphic art mart**[™]
NATIONAL SUPPLIERS TO SIGN, DIGITAL AND DISPLAY.

Why Choose Soudal's Adhesive Range?

- Excellent adhesion to both porous and non-porous substrates
- Excellent adhesion to the most common substrates
- True professional quality, less chance of DIY installation failure
- Cures underwater & to damp surfaces
- Safe for applicator, storage & shipping
- Does not contain solvents or isocyanate's
- Can be painted over with water-based paints
- No bubble-formation (no CO2 release)
- UV-resistant
- Good workability
- Non-shrinking
- Extended shelf life
- Low VOC, save for environment
- Non hazardous, no safety labelling required
- Good extrudability, even at low temperatures
- Permanently elastic properties, also at low temperatures

SOUDAL

Material Application Guide

Wall & Facade Covering

- Plaster
- Natural Stone
- Brick
- Concrete
- Aluminium
- Glass

Door Frames & Window Sills

- Natural or Coated
- Natural Stone
- Brick
- Concrete
- Aluminium
- Brass

Ceiling Panels

- Thermal Panels
- Synthetic Panels
- Wood
- PVC

Floor, Wall Tiles & Plinths

- Ceramics
- Granite
- Blue Stone
- Porous Materials
- Terracotta

Window Frames

- Coated Aluminium
- Solid Wood
- Synthetic

Roofing Elements

- Lead Sheets
- Colourbond Sheets
- Tiles

Construction Elements

- Aluminium
- Metal
- Stainless Steel
- Copper
- Timber
- Mouldings
- Most Plastics
- Fibre Glass
- Polystyrene
- Composite Panel
- Vinyl
- Most Rubbers
- Glass

General Application Guide

Applying Soudal's range of Adhesives is as easy as following 6 simple steps.

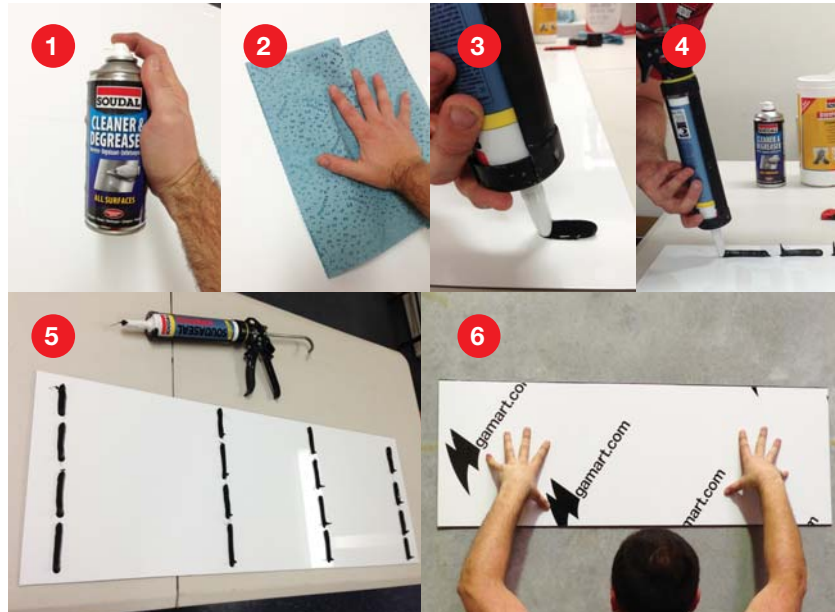
Step 1 - It is recommended that the substrate is cleaned using a solvent based cleaner such as Soudal Cleaner & Degreaser Spray.

Step 2 - Make sure the application surface is free of dust and loose debris.

Step 3 & 4 - Apply the adhesive in beads 10mm wide and 100mm long. (See Photo 5)

Step 5 - Apply the beads of adhesive spaced every 300mm across the panel.

Step 6 - Press the surfaces firmly together and hold for a few seconds to allow the adhesive to bond.



National Suppliers to Sign, Digital & Display Industries **Australia-Wide** 1300 GAMART (426 278) **24/7 Shopping** www.gamart.com.au

New South Wales

2/25 Loyalty Road
North Rocks NSW 2151
P: (02) 8843 0299
F: (02) 8843 0250
E: nsw@gamart.com.au

Queensland

10 Virginia Street
Geebung QLD 4034
P: (07) 3633 0100
F: (07) 3633 0999
E: qld@gamart.com.au

Victoria

10 Enterprise Court
Mulgrave VIC 3170
P: (03) 8562 1000
F: (03) 8562 1050
E: vic@gamart.com.au

graphic art martTM
NATIONAL SUPPLIERS TO SIGN, DIGITAL AND DISPLAY.